

AquaWatch

The Water Quality Initiative



What is GEO?

The Group on Earth Observations (GEO) is a partnership of more than 100 national governments and in excess of 100 Participating Organizations that envisions a future where decisions and actions for the benefit of humankind are informed by coordinated, comprehensive, and sustained Earth observations.



AquaWatch

AquaWatch is the water quality community of practice within the Group on Earth Observations that aims to develop and build the global capacity and utility of Earth Observation-derived water quality data, products and information to support water resources management and decision making.

MISSION

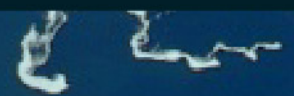
To improve the coordination, delivery and utilization of water quality information for the benefit of society.

GOAL

To develop and build the global capacity and utility of Earth Observation-derived water quality data, products and information to support water resources management and decision making.

Visit us at geoaquawatch.org

Contact us at info@geoaquawatch.org or srgreb@wisc.edu



AquaWatch

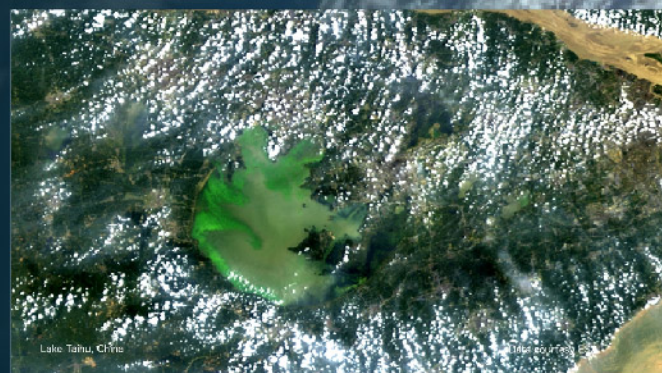
The Water Quality Initiative



The mission of the AquaWatch Initiative is to improve the coordination, delivery and utilization of water quality information for the benefit of society.

Long Term Goal

The goal of AquaWatch is to develop and build the global capacity and utility of Earth Observation-derived water quality data, products and information to support water resources management and decision making.

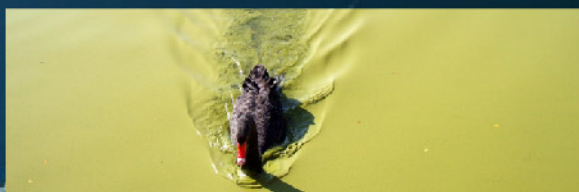


Short Term Goal

Over the next 3 years, AquaWatch will work to develop baseline global water quality monitoring products, and regional and local end-to-end prototype demonstrations.

How can you get involved?

AquaWatch currently has 5 working groups addressing various aspects of the development of the water quality monitoring and forecasting service including:



- Outreach & user engagement
- Observations & data
- Products & information
- Distribution, access & visualization
- Education & capacity building

If you are interested in contributing, please contact the GEO AquaWatch Secretariat:
info@geoaquawatch.org or Steve Greb AquaWatch Director, srgreb@wisc.edu

<https://www.geoaquawatch.org/>